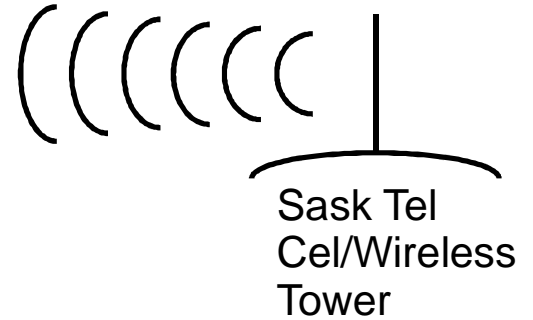
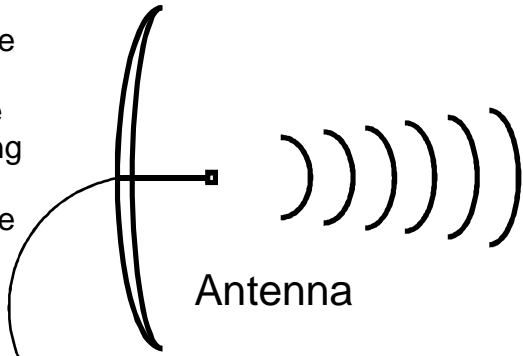


SaskTel Wireless Broadband

The long range antenna can usually just be lined up looking down the feedhorn at the tower.



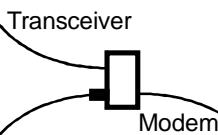
The cable connections must be watertight.



Note: Antennas should be grounded to house ground and lightning rod system

100' RG-6 Co-Ax

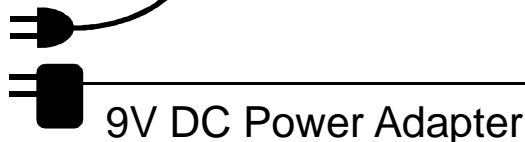
Power Inserter powers up the transceiver. Damage will result if connected backwards.



RJ-11 Ethernet cable plugs into ethernet port on PC or into WAN port on back of router if running a network.

24V DC power adapter

2' RG-6 Co-Ax



Intrex Online Services
w: intrex.ca e: intrex@sasktel.net
v: 692-6774 f: 692-6122